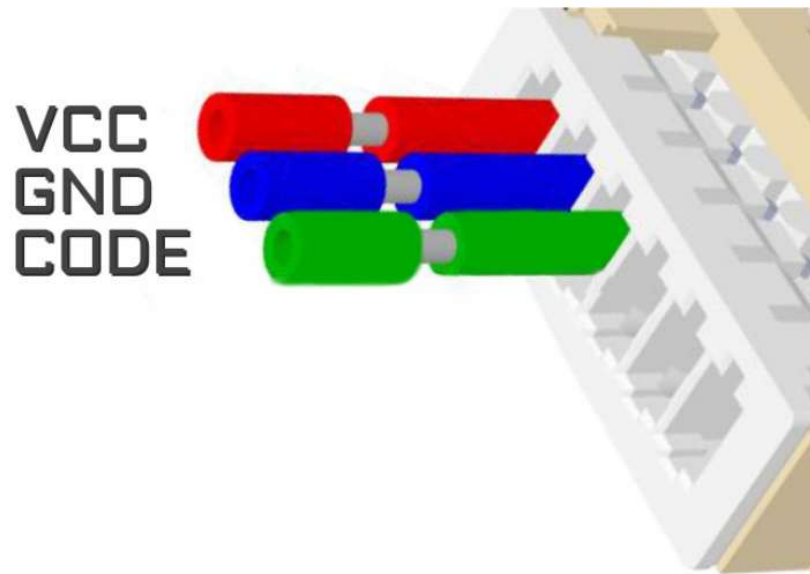


**Honda**

Honda: Accord, CRV, Civic und weitere  
(MJ 1999 – 2002)

### Wiring Colour Codes / Farbcodes der Verdrahtung



### The LED behavior

diagnostic mode - it flashes every second

adjusting to the ECU – flashing 0,1 sec

after adjusting it lights constantly and blinks every other second

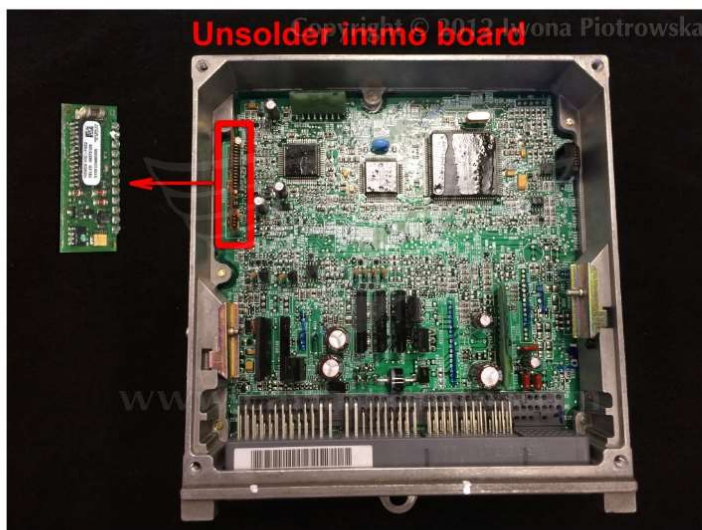
## Honda

### USE

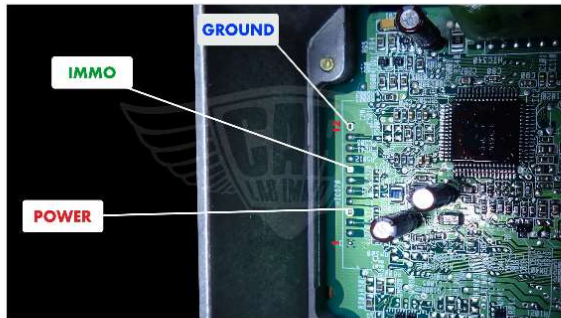
**Honda: Accord, CRV, Civic and other  
(production year 1999 - 2002)**



The emulator only works with ECU that has got immo board equipped with 28-pin processor with a label



Unsolder this immo board as shown in the picture above



Example connection diagram

**Before starting the car, disconnect the plug from immo box!!!**





**ECU Bosch M4.6.1**  
0 261 204 830  
**Honda Accord 1.6i 1999 year**



**Warning!!!**

**Due to possible construction changes of cars, check signals with multimeter in the ECU plug.**